

TRANSFORMATIVE EVOLVING RESEARCH PATIENT CARE SERVICE EXCELLENCE
COMPETENCE COMMUNITY DISCOVERY CHARACTER TRANSFORMATIVE EVOLVING
INNOVATION COMPETENCE COMMUNITY DISCOVERY CARING CHARACTER TRANSFORMATIVE
CURIOSITY INNOVATION COMPETENCE COMMUNITY DISCOVERY CARING CHARACTER TRAN
COMMUNICATION CURIOUSITY INNOVATION COMPETENCE COMMUNITY DISCOVERY CARING C
EXCELLENCE COMMUNICATION CURIOUSITY INNOVATION COMPETENCE COMMUNITY DISCOV
RESEARCH EDUCATION PATIENT CARE SERVICE EXCELLENCE COMMUNICATION CURIOUSITY



COLLEGE OF PHARMACY



Northeast Ohio

MEDICAL UNIVERSITY

Utilizing Experiential Students for the Provision of Patient Care

Charles Taylor, Pharm.D.

Dean, College of Pharmacy

Northeast Ohio Medical University

Objectives

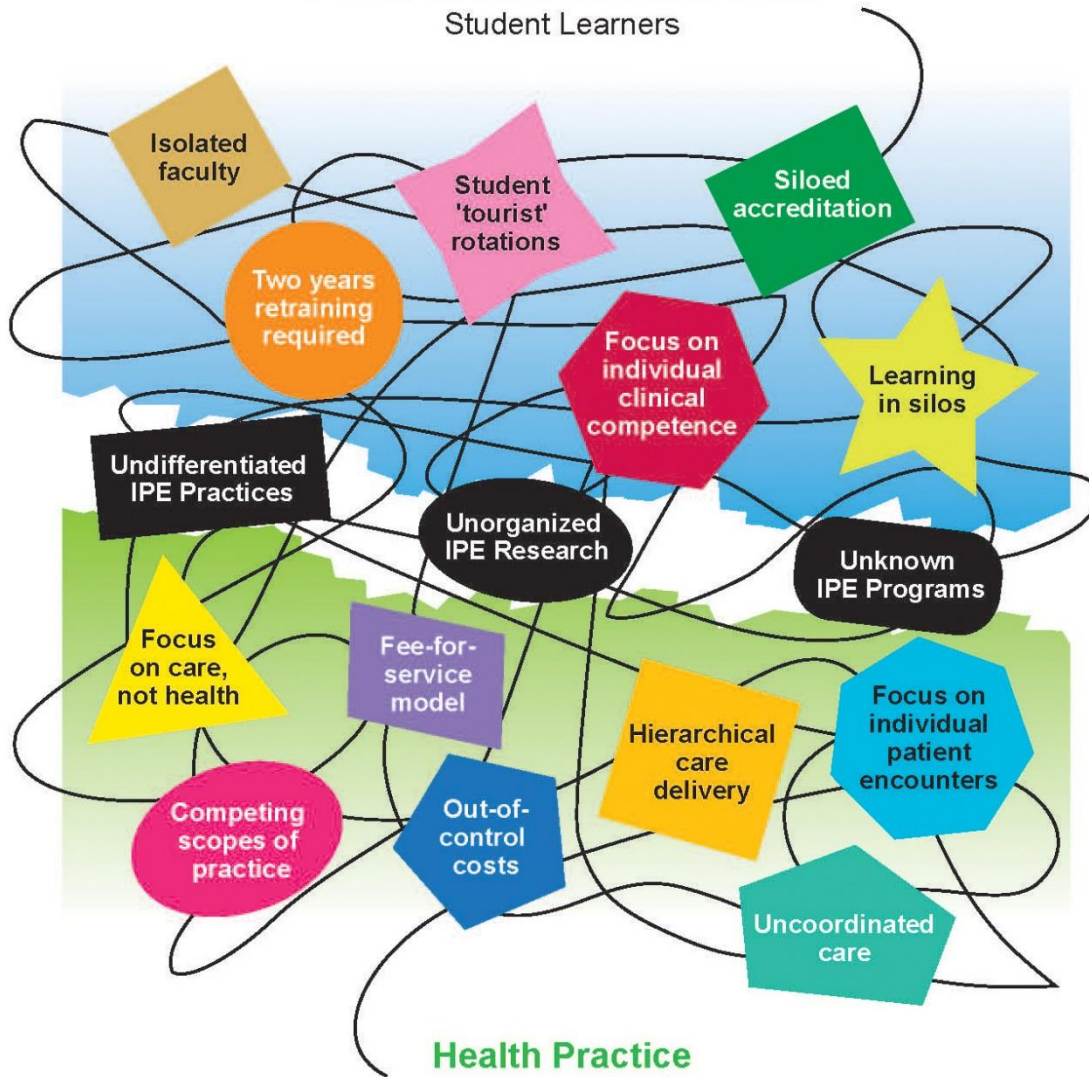
- Discuss the readiness of student pharmacists to be engaged in the provision of patient care.
- Compare pharmacy employer workforce perspectives with experiential education expectations.
- Frame the economic value that student pharmacists bring to health care systems.

THINK
BIG



Health Professional Education

Student Learners



Health Practice

Necessary Workforce



WHAT'S IN IT FOR YOU?

regulations unveiled health reform foes

WHAT'S IN IT FOR YOU?

Sealing the deal or health care changes pass

Final stretch for health bill

Health care is an American risk

HEALTH REFORM

Report New health care posts health revamp

like it or not

big government/ new stage dawning new plan

LANDMARK HEALTH BILL

'free'

Blank check

likely to get longer

no accountability at the top

Our costly freebies

Excessive rates to health law agenda

Health bill insurance

Obesity

House passes health reform/ No-cost preventive care

Health care/ Free clinic

HOUSE PASSES HEALTH REFORM

Outpatient f

SHARE

Questions

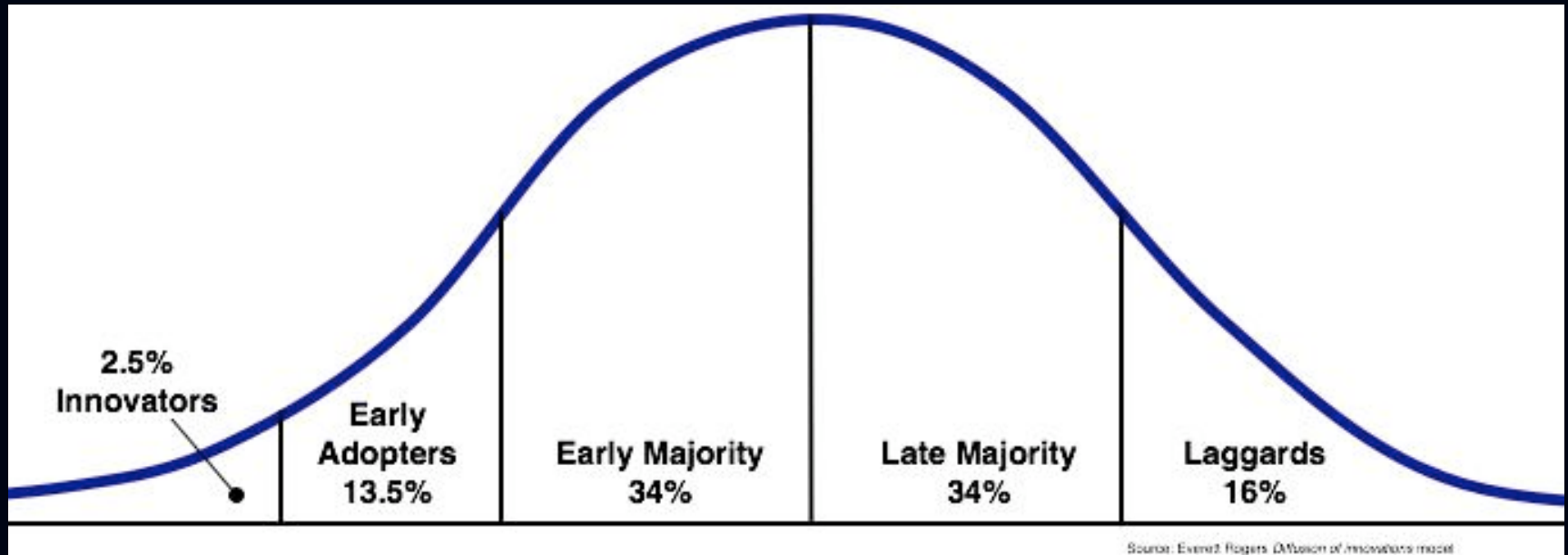
HEALTH REFORM

HEALTH CARE

Forced to be no more, than to Congress'

Bill: \$400 billion in tax

Diffusion of Pharmacy Innovation



The Student Experience

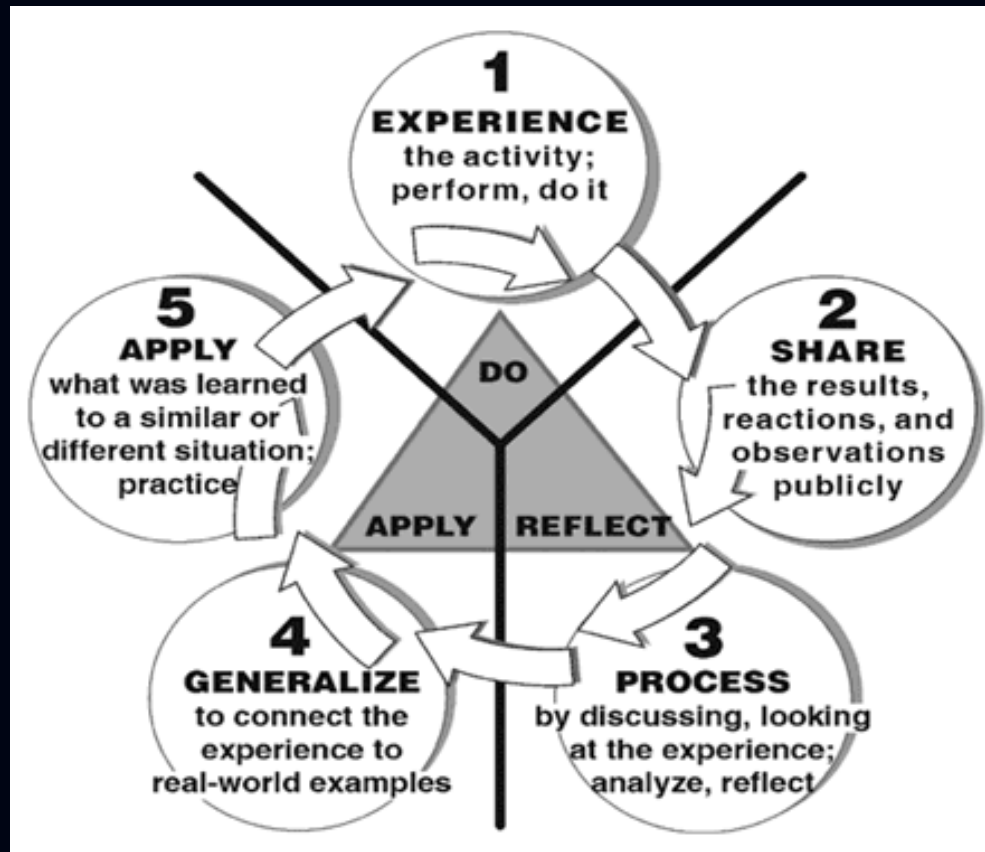
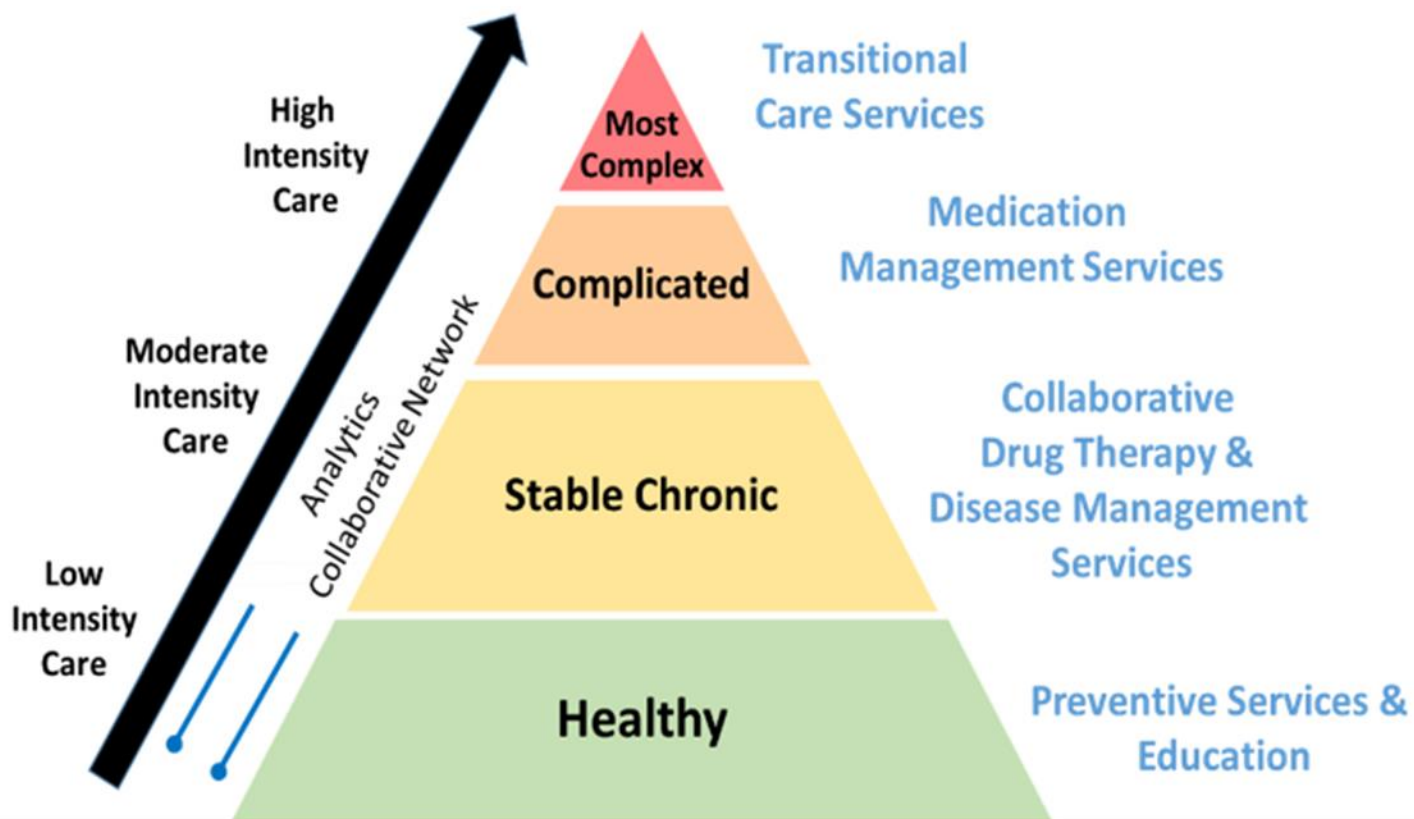
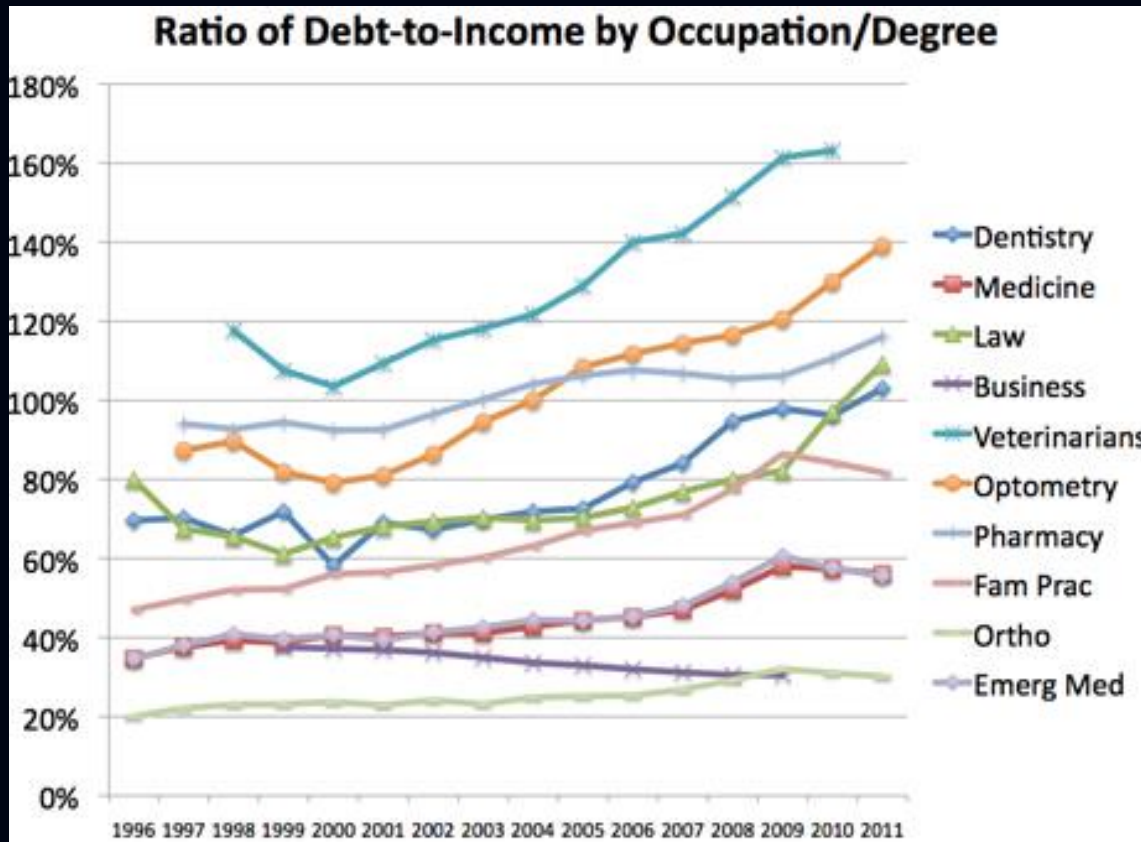


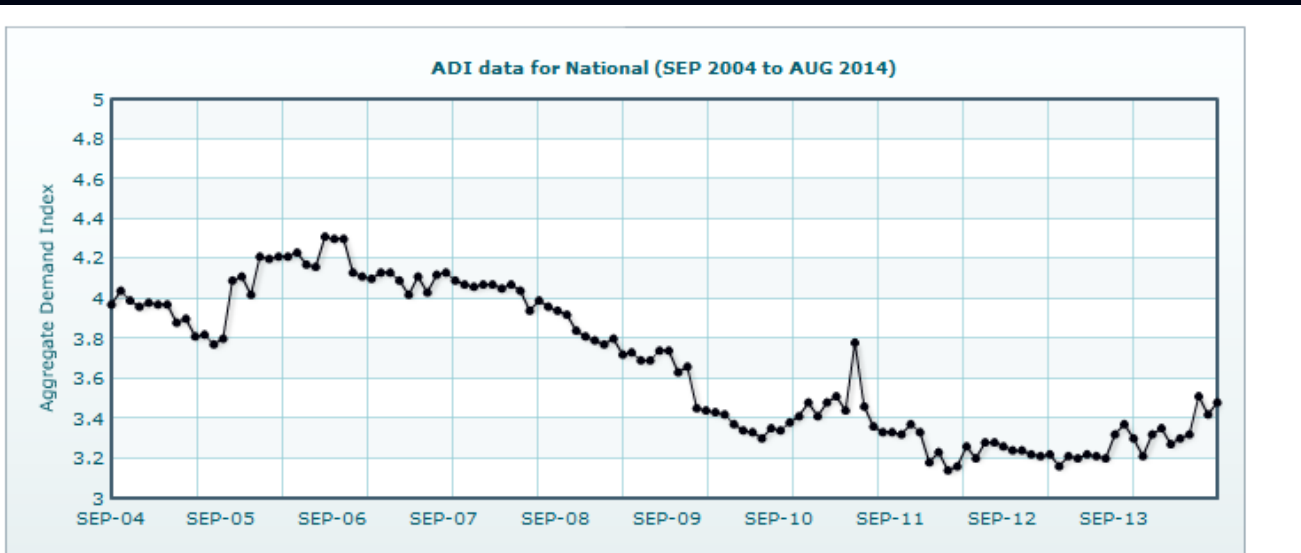
Diagram 1: Stratification of Advanced Pharmacist Services



Affordability of Pharmacy Education



Pharmacy Workforce Trends



Demand categories

- 5 = High demand: difficult to fill open positions
- 4 = Moderate demand: some difficulty filling open positions
- 3 = Demand in balance with supply
- 2 = Demand is less than the pharmacist supply available
- 1 = Demand is much less than the pharmacist supply available

The Value Proposition

$$\begin{array}{c} \mathbf{V} \\ \text{(VALUE)} \end{array} = \frac{\begin{array}{c} \mathbf{Q} \\ \text{(QUALITY)} \end{array} + \begin{array}{c} \mathbf{S} \\ \text{(SERVICE)} \end{array}}{\begin{array}{c} \mathbf{\$} \\ \text{(COST)} \end{array}}$$

Address Barriers to Value Proposition of Pharmacists

- Pharmacist Provider Status
- Pharmacist Scopes of Practice
- Pharmacist Intern Scopes of Practice
- Technician to Pharmacist Ratios
- Preceptor Development & Workplace Redesign
- NAPLEX