

Practicing at the Top of your Profession

District IV – NABP/AACP
11/06/2013

Phil Burgess, RPh, MBA
Chairman, Illinois State Board of Pharmacy



Phil Burgess Consulting

Learning Objectives



At the completion of this program, participants should be able to:

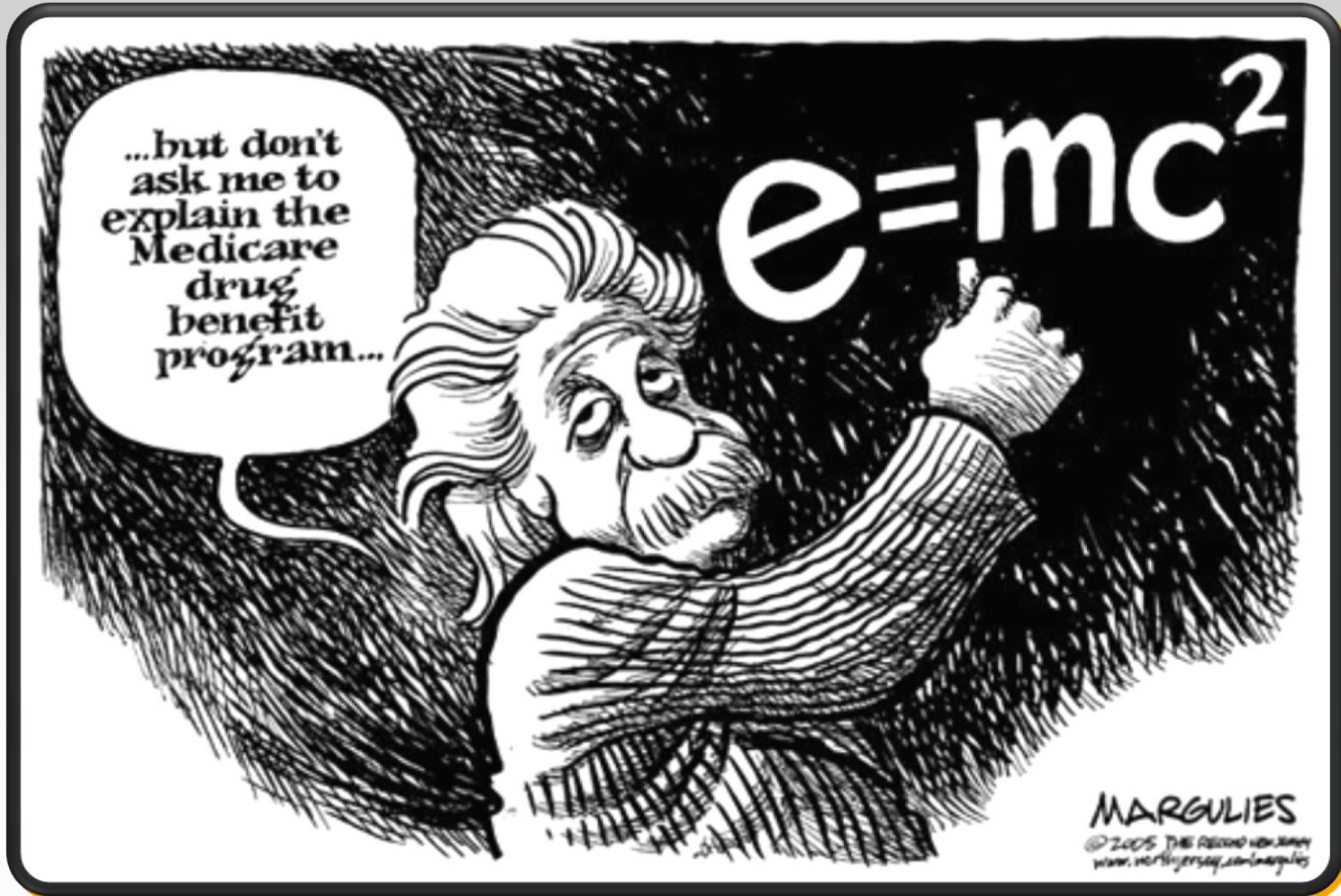
- **Understand as a pharmacist the opportunities and pitfalls with the Affordable Care Act.**
- **Understand Illinois pharmacy regulations as they relate to patient care.**

Disclaimer

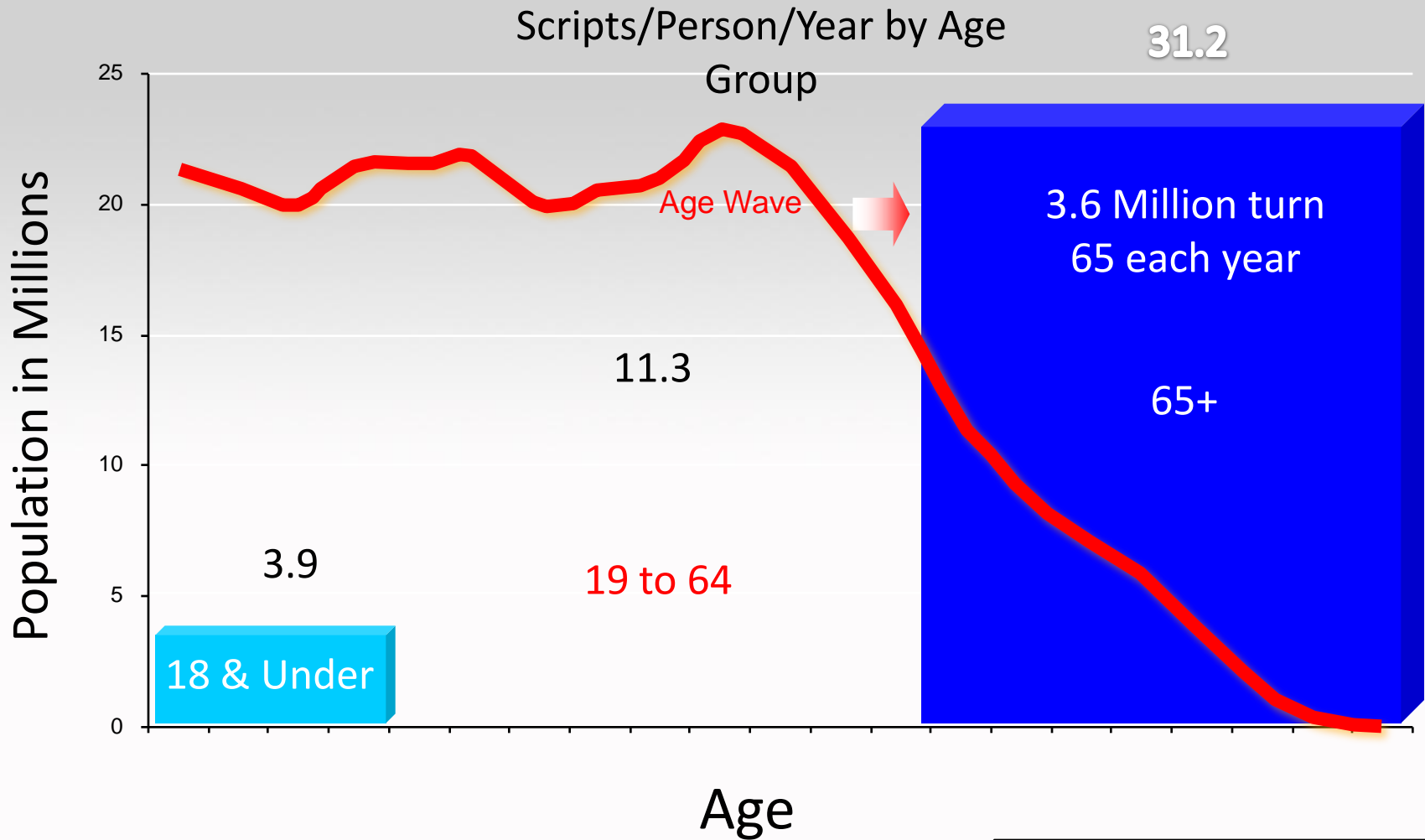


The speaker declares no conflicts of interest, real or apparent, and no financial interests in any company, product, or service mentioned in the program, including grants, employment, gifts, stock holdings, and honoraria.

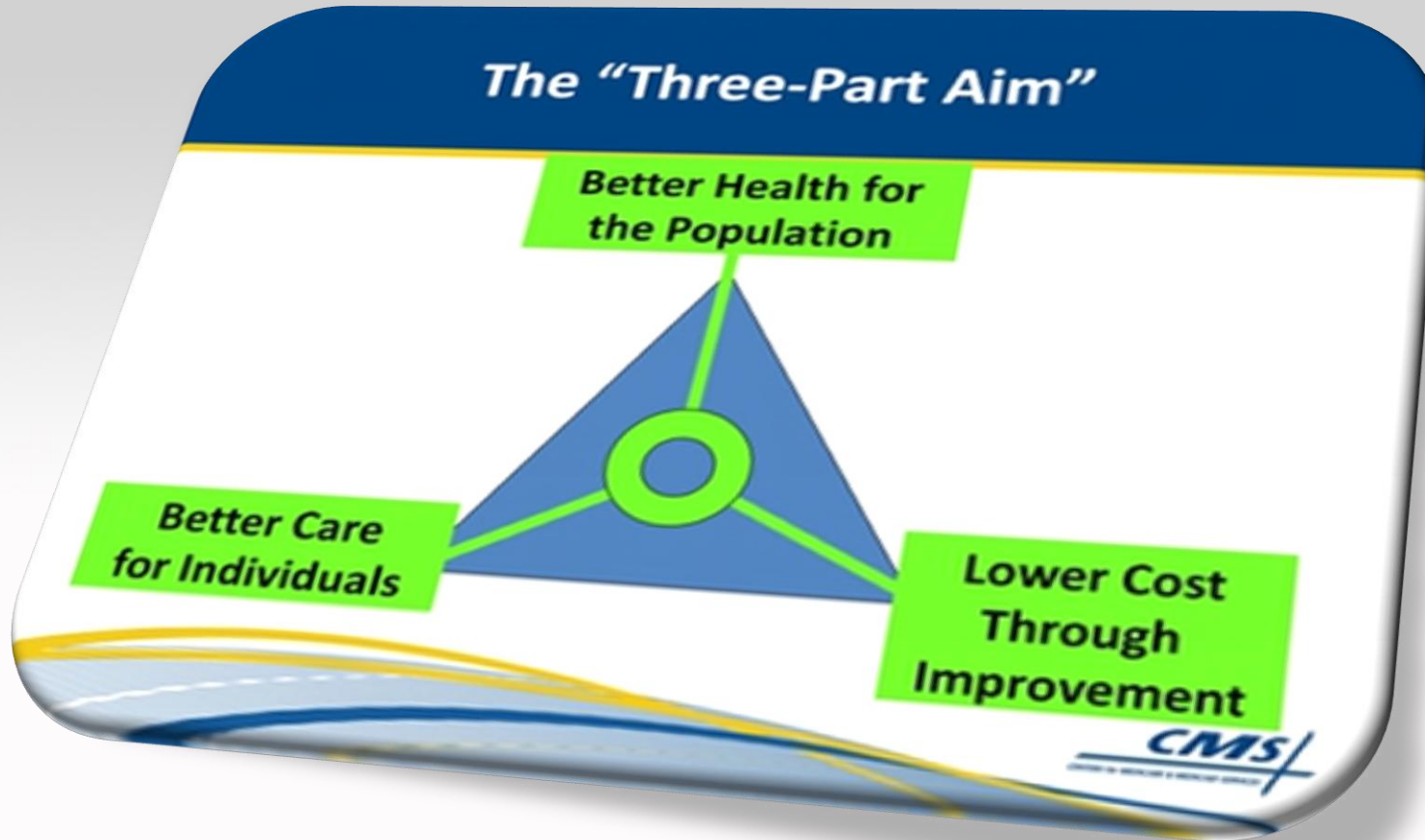
Disclaimer



Aging Creates New Demands for Medication



CMS Value





VALUE = Quality / Cost

Value-Driven Health Care



Clinical
Outcomes

Consistent
Delivery

Costs
Down

Quality

Easy
Access

Reliable
Reporting

Member
Satisfaction

Regulatory
Compliance

Medicare Plan Star Ratings



- Annual ratings of Medicare plans that are made available on Medicare Plan Finder
- Ratings are displayed as 1 to 5 stars
- Stars are calculated for each of 50 “measures” as well as an overall summary
- Ratings of all Medicare plans can be found at:
<http://www.medicare.gov>

Prescription Drug Plan Ratings

--	--	--

Summary Rating of Prescription Drug Plan (?)

[View previous ratings for these plans](#)

★★★ 3 out of 5 stars	★★ 2 out of 5 stars	★★½ 2.5 out of 5 stars
-------------------------	------------------------	---------------------------

+ Drug Plan Customer Service (?)

[Click to view data sources](#)

★★★★ 4 out of 5 stars	★★ 2 out of 5 stars	★★ 2 out of 5 stars
--------------------------	------------------------	------------------------

+ Member Complaints, Problems Getting Services, and Choosing to Leave the Plan (?)

[Click to view data sources](#)

★★★★ 4 out of 5 stars	★★★ 3 out of 5 stars	★★★ 3 out of 5 stars
--------------------------	-------------------------	-------------------------

+ Member Experience with Drug Plan (?)

[Click to view data sources](#)

★★★ 3 out of 5 stars	★★★ 3 out of 5 stars	★★★ 3 out of 5 stars
-------------------------	-------------------------	-------------------------

+ Drug Pricing and Patient Safety (?)

[Click to view data sources](#)

★★★ 3 out of 5 stars	★★ 2 out of 5 stars	★★★ 3 out of 5 stars
-------------------------	------------------------	-------------------------



Drug Pricing and Patient Safety (?)

[Click to view data sources](#)

★★★ 3 out of 5 stars	★★ 2 out of 5 stars	★★★ 3 out of 5 stars
-------------------------	------------------------	-------------------------

Plan Provides Accurate Price Information for Medicare's Plan Finder Website and Keeps Drug Prices Stable

★★★	★★★	★★★
-----	-----	-----

Plan Members 65 and Older Who Received Prescriptions for Certain Drugs with a High Risk of Side Effects, There May Be Safer Drug Choices (?)

★★	★★	★★★
----	----	-----

Using the Kind of Blood Pressure Medication That Is Recommended for People with Diabetes (?)

★★★	★	★★
-----	---	----

Taking Oral Diabetes Medication as Directed (?)

★★★	★★	★★★
-----	----	-----

Taking Blood Pressure Medication as Directed (?)

★★★	★★	★★★
-----	----	-----

Taking Cholesterol Medication as Directed (?)

★★★	★★	★★★
-----	----	-----

Part D Ratings – Implications



- Medicare Advantage will include greater rewards for plans with 4 or 4.5 stars for 2014 ratings (which are based on plan performance in 2012)
- Low-performing plans (<3 stars for 3 years) may be removed from the Medicare program
- CMS currently places a low-performer icon next to the low-performing plans on the Medicare Plan Finder, and issues compliance notices to low-performing plans
- CMS may warn enrollees about low-performing plans to discourage them from enrolling in these plans
- New Medicare beneficiaries may be prevented from enrolling in a low-performing plan

Opportunities for Pharmacists



- **Health Plans are looking for cost-conscious provider partners to include in their programs.**
- **Focus on “Continuity of Care” will necessitate greater role for pharmacists in medication management.**
- **Providers that are looking to manage costs and improve STARS ratings are also looking for more “touch points” with patients.**

Pitfalls



- **Restrict network to “quality” providers.**
 - Accreditation ??
 - Certification ??
- **Increased scrutiny by CMS and provider networks.**
- **Major portion of cost-savings expected from ACA is related to reducing fraud and abuse.**
- **Goal from audits is to GET MONEY BACK !!**



“Medication therapy management services may also include patient care functions authorized by a physician licensed to practice medicine in all its branches for his or her identified patient or groups of patients under specified conditions or limitations in a standing order from the physician.”

IL Pract. Act 85/3. Definitions (aa)

Establish a Protocol



- **Physician provides instructions to the pharmacist for the physician's own patients.**
- **Instructions provide for the pharmacist, pursuant to those directions, to utilize his/her own professional judgment and skills in managing the patient's prescriptions.**
- **Pharmacists need to be pro-actively reaching out to prescribers to document these instructions and to establish those collaborative relationships.**
- **Partnering with hospitals to provide continuity of care for patients and to assist them in decreasing readmissions is also a tremendous opportunity.**

Pharmacy Principles for Health Care Reform



- **“....because of the immense variety and complexity of medications now available.....the pharmacist has become an essential resource...and thus access to his or her expertise must be possible at all times.”**

Institute of Medicine

Phil Burgess Consulting

Summary



- Value-based purchasing is already prevalent and Medicare Star Ratings will continue to drive greater attention to medication safety and adherence.
- Illinois pharmacy regulations should not be viewed as an hindrance in practicing at the top of your profession.
- **SEIZE THIS OPPORTUNITY !!**



“It is not the strongest of the species that survives, nor the most intelligent, but the one most responsive to change.”

Charles Darwin

Questions ??



Contact Information



Philip P. Burgess, RPh, DPh, MBA

Phil Burgess Consulting, LLC

3800 N. Lake Shore Drive

Chicago, IL 60613

(773) 595-5990

phil@philburgessconsulting.com



Phil Burgess Consulting